

INSTALLING YOUR E-way® TAG



LOCATION

It is important for your tag's performance that it is correctly positioned and installed with the right bracket. Tags should **NEVER** be handheld, attached to the dash or left in the glovebox. If your tag is not read due to incorrect installation, or if the tag is not in your vehicle, a motorway administration fee may be charged.

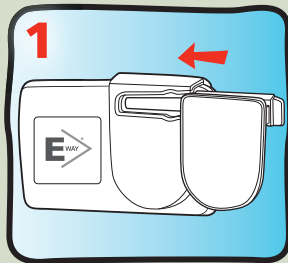


SLOPED WINDSCREEN (CARS)

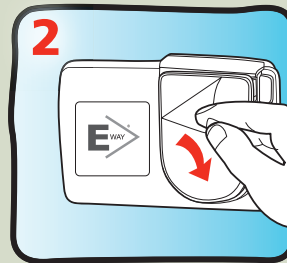
- > For sloped windscreens the best location is attached to the windscreen behind the rear vision mirror.
- > If there is insufficient room then locate adjacent to the rear vision mirror at the top of the windscreen.
- > If there is any metal such as external sun visors, ladders, etc, above the tag it will need to be fitted lower down the windscreen.
- > Some windscreens may contain metal to activate features such as rain detectors for automated wipers etc. Metalised windscreens can interfere with the performance of the tag. Please ensure you consult your user guide to determine the exact location of an unmetallised section on your windscreen to correctly install the tag. We have included some images of correct tag installations on the reverse of this flyer.
- > For split windscreens fit the tag left of the join.

IMPORTANT TIPS TO CONSIDER WHEN INSTALLING YOUR TAG

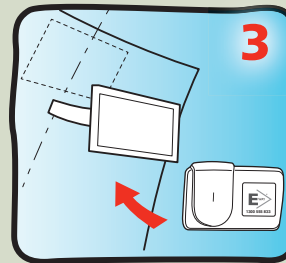
- > Position your vehicle out of direct sunlight during installation. Clean the area of the windscreen where the bracket is to be fitted, with the wipe provided and allow to dry.
- > Carefully trial tag bracket (without removing adhesive tape), to check the tag will fit correctly in the space. The tag should not be hit by loose objects, or the driver's vision obstructed.
- > When correctly fitted, the E-way® logo and telephone number will face inwards. **Should you experience installation difficulties, please contact our Customer Service Call Centre on 1300 555 833**



1
Slide the bracket into the tag.

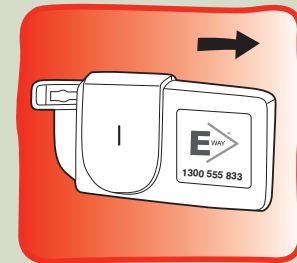


2
Peel off the adhesive backing.



3
Align the tag and bracket. Press onto the windscreen and hold for one minute.

REMOVAL



When you wish to remove the tag, slide the tag to the right.

Bracket removal tip: use a small thin object like a paper clip or some fishing line to dislodge the adhesive glue from the windscreen